

Rapport météorologique Station de Sain Bel (69)

Octobre 2013

Données journalières

| Jour du Mois | T moyenne | T mini | T maxi | Précipitations | Vent | | Vent |
|--------------|-----------|--------|--------|----------------|-------|-------------|---------|
| | Tm | Tn | Tx | | Moyen | Rafale maxi | |
| | °C | °C | °C | mm | km/h | km/h | Moyenne |
| 01/10/2013 | 15.9 | 13.2 | 19.8 | 0.2 | 1.0 | 12.9 | N |
| 02/10/2013 | 17.7 | 13.9 | 23.4 | 0.0 | 1.9 | 17.7 | NE |
| 03/10/2013 | 18.6 | 14.7 | 25.2 | 0.0 | 3.1 | 40.2 | SSW |
| 04/10/2013 | 16.4 | 15.1 | 18.7 | 14.6 | 1.5 | 20.9 | SW |
| 05/10/2013 | 15.9 | 12.5 | 21.0 | 1.0 | 1.6 | 17.7 | WNW |
| 06/10/2013 | 12.9 | 9.3 | 16.7 | 0.2 | 2.5 | 22.5 | NW |
| 07/10/2013 | 13.9 | 12.6 | 15.1 | 0.0 | 2.2 | 17.7 | NNE |
| 08/10/2013 | 13.8 | 12.7 | 15.5 | 0.0 | 0.5 | 16.1 | NE |
| 09/10/2013 | 13.7 | 12.6 | 15.4 | 0.0 | 0.3 | 11.3 | NW |
| 10/10/2013 | 10.4 | 7.8 | 12.6 | 3.0 | 2.2 | 27.4 | WNW |
| 11/10/2013 | 7.7 | 6.1 | 10.6 | 1.4 | 2.7 | 22.5 | W |
| 12/10/2013 | 4.4 | 0.7 | 7.6 | 6.4 | 1.2 | 17.7 | SW |
| 13/10/2013 | 8.1 | 0.7 | 16.7 | 0.4 | 0.7 | 22.5 | SSW |
| 14/10/2013 | 12.4 | 10.2 | 16.8 | 1.4 | 1.3 | 16.1 | SSW |
| 15/10/2013 | 12.8 | 9.8 | 17.1 | 1.6 | 1.2 | 17.7 | SSW |
| 16/10/2013 | 14.1 | 12.8 | 16.7 | 2.6 | 0.1 | 12.9 | NNW |
| 17/10/2013 | 13.9 | 7.8 | 18.2 | 0.4 | 1.4 | 17.7 | NW |
| 18/10/2013 | 10.3 | 4.8 | 16.9 | 0.2 | 2.1 | 20.9 | S |
| 19/10/2013 | 13.7 | 6.7 | 22.4 | 0.2 | 1.7 | 25.7 | SSW |
| 20/10/2013 | 15.2 | 12.4 | 18.0 | 1.2 | 2.3 | 29.0 | SW |
| 21/10/2013 | 14.8 | 11.0 | 21.8 | 0.0 | 1.1 | 22.5 | SW |
| 22/10/2013 | 19.1 | 12.1 | 24.8 | 0.0 | 6.3 | 48.3 | SSW |
| 23/10/2013 | 17.1 | 12.2 | 21.2 | 4.4 | 3.7 | 59.5 | SSE |
| 24/10/2013 | 11.8 | 6.5 | 17.2 | 0.2 | 1.8 | 17.7 | NW |
| 25/10/2013 | 15.8 | 10.8 | 22.3 | 0.2 | 3.0 | 29.0 | SSW |
| 26/10/2013 | 16.9 | 11.3 | 23.4 | 0.0 | 2.5 | 24.1 | SW |
| 27/10/2013 | 15.9 | 12.2 | 20.4 | 16.8 | 4.0 | 35.4 | SW |
| 28/10/2013 | 16.1 | 9.5 | 24.1 | 0.4 | 3.8 | 38.6 | WSW |
| 29/10/2013 | 10.5 | 6.4 | 14.4 | 2.8 | 0.6 | 16.1 | SW |
| 30/10/2013 | 7.4 | 3.3 | 12.9 | 0.2 | 3.7 | 27.4 | SW |
| 31/10/2013 | 6.8 | 2.7 | 12.3 | 0.2 | 3.3 | 17.7 | SW |

Moyennes et Indicateurs

Moyennes du Mois et cumul des précipitations

| | | | | | |
|-------------------------|------|------------------------------|------|--------------------|------|
| T Moyenne (Tmm) °C | 13.4 | T mini du mois (Tnn) °C | 0.7 | vent moyen km/h | 2.1 |
| T mini moyenne (Tnm) °C | 9.5 | T maxi du mois (Tmx) °C | 25.2 | rafale maxi (km/h) | 59.5 |
| T maxi moyenne (Txm) °C | 18.0 | Cumul Précipitations mois mm | 60.0 | | |

Indicateurs : nombre de jours avec conditions

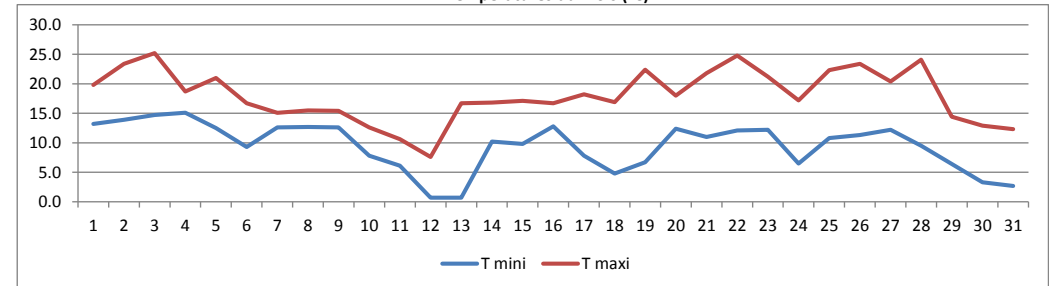
| | | | |
|-----------|----|----------------|---|
| Tx > 35°C | 0 | Tn < 0°C (Gel) | 0 |
| Tx > 30°C | 0 | Tn < -5°C | 0 |
| Tx > 25°C | 1 | Tn < -10°C | 0 |
| Tx > 20°C | 11 | Tx < 0°C | 0 |

| | | | |
|------------|----|-----------------|----|
| Rr > 1 mm | 12 | Vent > 20 km/h | 17 |
| Rr > 5 mm | 3 | Vent > 50 km/h | 1 |
| Rr > 10 mm | 2 | Vent > 100 km/h | 0 |

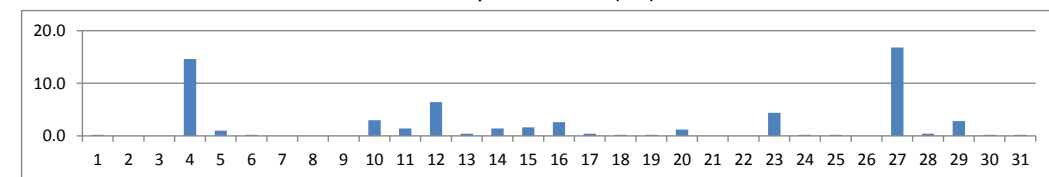


© Jérôme Piche - Reproduction interdite
<http://www.meteo-sain-bel.fr>

Températures du mois (°C)



Précipitations du mois (mm)



Vent moyen et rafales (km/h)

