

# Rapport météorologique **Octobre 2011**

## Station de Sain Bel (69)

### Données journalières

| Jour du Mois | T moyenne | T mini | T maxi | Précipitations | Vent  |             | Vent    |
|--------------|-----------|--------|--------|----------------|-------|-------------|---------|
|              | Tm        | Tn     | Tx     |                | Moyen | Rafale maxi |         |
|              | °C        | °C     | °C     | mm             | km/h  | km/h        | Moyenne |
| 1            | 17.6      | 10.8   | 25.9   | 0.0            | 3.1   | 20.9        | SSW     |
| 2            | 17.7      | 11.0   | 26.1   | 0.0            | 2.7   | 16.1        | SSW     |
| 3            | 18.1      | 12.4   | 25.9   | 0.0            | 2.7   | 16.1        | SW      |
| 4            | 18.2      | 11.1   | 27.2   | 0.0            | 2.6   | 16.1        | W       |
| 5            | 16.2      | 11.2   | 22.0   | 0.0            | 3.0   | 16.1        | SW      |
| 6            | 15.1      | 8.4    | 22.2   | 0.8            | 2.1   | 27.4        | SW      |
| 7            | 11.2      | 9.7    | 14.8   | 0.8            | 0.8   | 25.7        | NNW     |
| 8            | 10.1      | 8.9    | 11.8   | 5.4            | 2.3   | 24.1        | NW      |
| 9            | 10.2      | 8.8    | 11.7   | 11.8           | 0.5   | 12.9        | NE      |
| 10           | 16.1      | 11.9   | 20.6   | 1.0            | 2.4   | 20.9        | NNW     |
| 11           | 14.5      | 10.9   | 18.2   | 0.0            | 2.4   | 17.7        | N       |
| 12           | 13.9      | 11.1   | 17.2   | 0.0            | 2.4   | 20.9        | NNE     |
| 13           | 14.5      | 12.8   | 16.8   | 0.0            | 3.3   | 25.7        | N       |
| 14           | 11.8      | 8.1    | 15.4   | 0.0            | 3.2   | 25.7        | NNE     |
| 15           | 9.5       | 3.0    | 18.0   | 0.2            | 1.7   | 14.5        | SW      |
| 16           | 11.1      | 4.8    | 19.4   | 0.2            | 2.2   | 14.5        | SW      |
| 17           | 12.1      | 7.0    | 19.7   | 0.2            | 1.9   | 14.5        | SSW     |
| 18           | 11.6      | 5.0    | 20.3   | 0.2            | 1.3   | 14.5        | SSW     |
| 19           | 9.7       | 4.3    | 17.1   | 10.6           | 2.7   | 30.6        | NW      |
| 20           | 6.1       | 3.2    | 10.8   | 0.4            | 3.5   | 25.7        | NW      |
| 21           | 3.2       | 0.1    | 6.6    | 0.2            | 4.1   | 19.3        | S       |
| 22           | 6.1       | 2.0    | 14.1   | 0.0            | 1.6   | 17.7        | NNE     |
| 23           | 7.8       | 0.7    | 15.4   | 0.2            | 3.2   | 32.2        | SSW     |
| 24           | 11.1      | 3.3    | 17.2   | 0.4            | 6.4   | 48.3        | SSW     |
| 25           | 12.4      | 9.1    | 15.2   | 15.4           | 3.3   | 38.6        | S       |
| 26           | 9.0       | 3.2    | 15.1   | 0.2            | 2.5   | 20.9        | SSW     |
| 27           | 12.6      | 3.3    | 18.2   | 0.2            | 5.8   | 40.2        | SSW     |
| 28           | 11.8      | 9.7    | 13.9   | 3.2            | 1.0   | 12.9        | NNE     |
| 29           | 12.8      | 10.2   | 16.9   | 0.0            | 0.5   | 6.4         | WNW     |
| 30           | 13.3      | 10.6   | 16.3   | 0.0            | 1.5   | 14.5        | W       |
| 31           | 13.5      | 9.8    | 17.9   | 0.0            | 2.6   | 24.1        | SW      |

### Moyennes et Indicateurs

#### Moyennes du Mois et cumul des précipitations

|                         |      |                              |      |                    |      |
|-------------------------|------|------------------------------|------|--------------------|------|
| T Moyenne (Tmm) °C      | 12.2 | T mini du mois (Tnn) °C      | 0.1  | vent moyen km/h    | 2.7  |
| T mini moyenne (Tnm) °C | 7.6  | T maxi du mois (Tmx) °C      | 27.2 | rafale maxi (km/h) | 48.3 |
| T maxi moyenne (Txm) °C | 17.7 | Cumul Précipitations mois mm | 51.4 |                    |      |

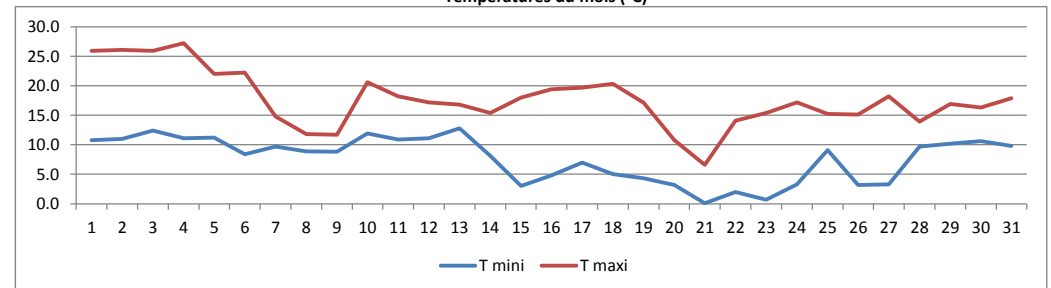
#### Indicateurs : nombre de jours avec conditions

|            |   |                 |    |
|------------|---|-----------------|----|
| Tx ≥ 35°C  | 0 | Tn ≤ 0°C (Gel)  | 0  |
| Tx ≥ 30°C  | 0 | Tn ≤ -5°C       | 0  |
| Tx ≥ 25°C  | 4 | Tn ≤ -10°C      | 0  |
| Tx ≥ 20°C  | 8 | Tx ≤ 0°C        | 0  |
| Rr ≥ 1 mm  | 6 | Vent ≥ 20 km/h  | 16 |
| Rr ≥ 5 mm  | 4 | Vent ≥ 50 km/h  | 0  |
| Rr ≥ 10 mm | 3 | Vent ≥ 100 km/h | 0  |

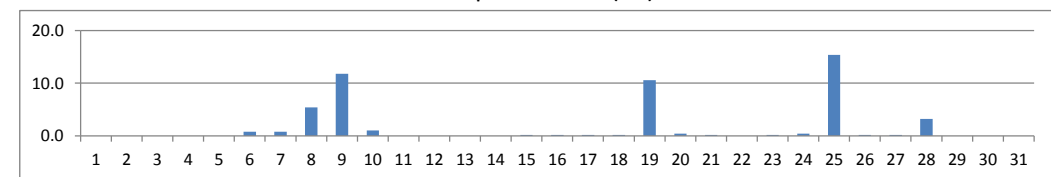


© Jérôme Piche - Reproduction interdite  
<http://jerome.piche.free.fr>

#### Températures du mois (°C)



#### Précipitations du mois (mm)



#### Vent moyen et rafales (km/h)

