

# Rapport météorologique **Août** **2013**

## Station de Sain Bel (69)

### Données journalières

| Jour du Mois | T moyenne   | T mini      | T maxi      | Précipitations | Vent       |             | Vent      |
|--------------|-------------|-------------|-------------|----------------|------------|-------------|-----------|
|              | Tm          | Tn          | Tx          | Rr             | Moyen      | Rafale maxi | Direction |
|              | °C          | °C          | °C          | mm             | km/h       | km/h        | Moyenne   |
| 01/08/2013   | 24.6        | 15.1        | 34.6        | 0.0            | 4.2        | 27.4        | SW        |
| 02/08/2013   | <b>24.9</b> | 13.9        | 34.6        | 0.0            | 4.8        | 35.4        | S         |
| 03/08/2013   | 23.3        | 16.9        | 29.1        | 0.0            | 3.2        | 20.9        | NE        |
| 04/08/2013   | 23.3        | 16.8        | 29.3        | 0.0            | 3.4        | 19.3        | WSW       |
| 05/08/2013   | 24.3        | 16.0        | 33.8        | 0.2            | 2.7        | 24.1        | SW        |
| 06/08/2013   | 23.1        | <b>17.7</b> | 29.4        | 0.4            | 2.7        | 19.3        | ENE       |
| 07/08/2013   | 17.9        | 15.8        | 20.8        | 19.2           | 2.4        | 27.4        | SW        |
| 08/08/2013   | 16.6        | 15.4        | 18.9        | <b>46.4</b>    | 1.8        | 24.1        | SW        |
| 09/08/2013   | 18.3        | 11.8        | 24.2        | 0.0            | 1.9        | 19.3        | N         |
| 10/08/2013   | 19.2        | 13.6        | 25.3        | 0.0            | 3.1        | 22.5        | NNE       |
| 11/08/2013   | 18.7        | 11.2        | 25.7        | 0.0            | 2.3        | 17.7        | SW        |
| 12/08/2013   | 20.8        | 12.2        | 29.0        | 0.0            | 1.6        | 14.5        | WSW       |
| 13/08/2013   | 20.2        | 15.5        | 24.8        | 0.0            | 3.5        | 22.5        | ENE       |
| 14/08/2013   | 16.8        | 10.2        | 22.7        | 0.0            | 5.6        | 30.6        | SW        |
| 15/08/2013   | 18.0        | 9.3         | 26.4        | 0.0            | 3.1        | 19.3        | SW        |
| 16/08/2013   | 20.5        | 11.6        | 29.3        | 0.0            | 1.8        | 14.5        | SW        |
| 17/08/2013   | 22.5        | 15.9        | 29.3        | 0.0            | 3.2        | 16.1        | WSW       |
| 18/08/2013   | 22.2        | 14.3        | 29.9        | 0.0            | 2.1        | 16.1        | WSW       |
| 19/08/2013   | 19.8        | 13.9        | 24.3        | 0.0            | 3.4        | 27.4        | SW        |
| 20/08/2013   | 18.2        | 11.7        | 24.7        | 0.0            | <b>5.8</b> | 30.6        | SW        |
| 21/08/2013   | 17.9        | 9.4         | 26.1        | 0.0            | 3.4        | 24.1        | ENE       |
| 22/08/2013   | 19.5        | 10.2        | 28.4        | 0.0            | 2.3        | 17.7        | WSW       |
| 23/08/2013   | 21.9        | 12.4        | 31.6        | 0.0            | 1.6        | 14.5        | WSW       |
| 24/08/2013   | 19.5        | 13.8        | 24.8        | 3.4            | 2.7        | 24.1        | SW        |
| 25/08/2013   | 16.3        | 11.8        | 21.4        | 0.0            | 2.3        | 16.1        | N         |
| 26/08/2013   | 15.6        | <b>8.4</b>  | 22.4        | 0.0            | 2.6        | 20.9        | SW        |
| 27/08/2013   | <b>15.1</b> | 12.7        | <b>17.4</b> | 6.6            | 1.0        | 11.3        | WSW       |
| 28/08/2013   | 17.1        | 12.6        | 22.9        | 0.2            | 3.5        | 29.0        | SW        |
| 29/08/2013   | 17.4        | 11.1        | 24.6        | 0.0            | 4.8        | 22.5        | SW        |
| 30/08/2013   | 17.7        | 9.7         | 25.2        | 0.0            | 2.1        | 16.1        | WSW       |
| 31/08/2013   | 18.8        | 12.0        | 26.1        | 0.0            | 3.7        | 19.3        | SW        |

### Moyennes et Indicateurs

#### Moyennes du Mois et cumul des précipitations

|                         |      |                              |      |                    |      |
|-------------------------|------|------------------------------|------|--------------------|------|
| T Moyenne (Tmm) °C      | 19.7 | T mini du mois (Tnn) °C      | 8.4  | vent moyen km/h    | 3.0  |
| T mini moyenne (Tnm) °C | 13.0 | T maxi du mois (Tmx) °C      | 34.6 | rafale maxi (km/h) | 35.4 |
| T maxi moyenne (Txm) °C | 26.4 | Cumul Précipitations mois mm | 76.4 |                    |      |

#### Indicateurs : nombre de jours avec conditions

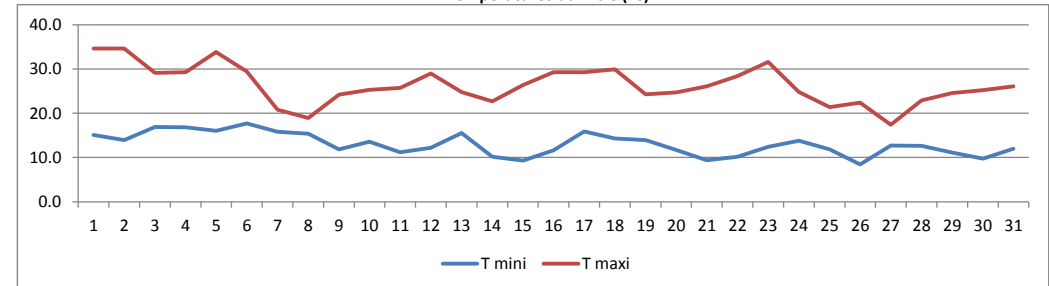
|           |    |                |   |
|-----------|----|----------------|---|
| Tx > 35°C | 0  | Tn < 0°C (Gel) | 0 |
| Tx > 30°C | 4  | Tn < -5°C      | 0 |
| Tx > 25°C | 18 | Tn < -10°C     | 0 |
| Tx > 20°C | 29 | Tx < 0°C       | 0 |

|            |   |                 |    |
|------------|---|-----------------|----|
| Rr > 1 mm  | 4 | Vent > 20 km/h  | 16 |
| Rr > 5 mm  | 3 | Vent > 50 km/h  | 0  |
| Rr > 10 mm | 2 | Vent > 100 km/h | 0  |

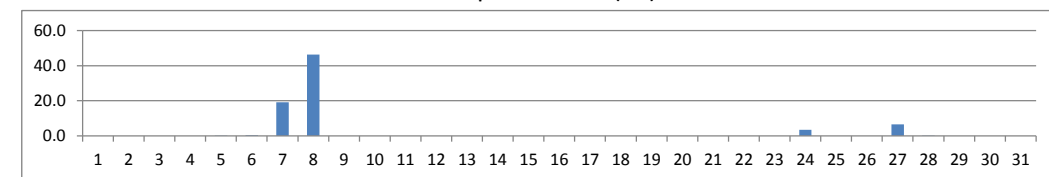


© Jérôme Piche - Reproduction interdite  
<http://www.meteo-sain-bel.fr>

#### Températures du mois (°C)



#### Précipitations du mois (mm)



#### Vent moyen et rafales (km/h)

